



**Cognitive accesibility  
on cultural heritage**

# GOOD PRACTICES



[www.acceasyproject.eu](http://www.acceasyproject.eu)



Cofinanciado por el  
programa Erasmus+  
de la Unión Europea

# SELECTION OF GOOD PRACTICES

# 1. THYSSEN-BORNEMISZA MUSEUM, MADRID

# MUSEUM,

DEDAL GAMES is an inclusive video game. EducaThyssen



fREE auDio DEscRiPtions,  
in vaRious languagEs,  
with simPLe languagE,  
EXPlanations BY THE  
autHoR and with moRE  
than 20 woRks fRom THE  
PERmanEnt collEction



it also offERs an EasY  
REaDing guiDE in sEvERal  
languagEs

Throughout 2021 the project of the Easy Museum program has been the Dedal games project, a project that proposes rethinking access to the museum using technology and digital narratives as part of an educational process that is extensive in time and intense in creation.

An initiative that seeks to create a game for all audiences, thanks to the collaboration of different groups

**Accesibility guide of Museo Guggenheim Bilbao**

<https://cms.guggenheim-bilbao.eus/uploads/2019/11/Accesibilidad-ES.pdf>

## 2. CITY OF AVILA



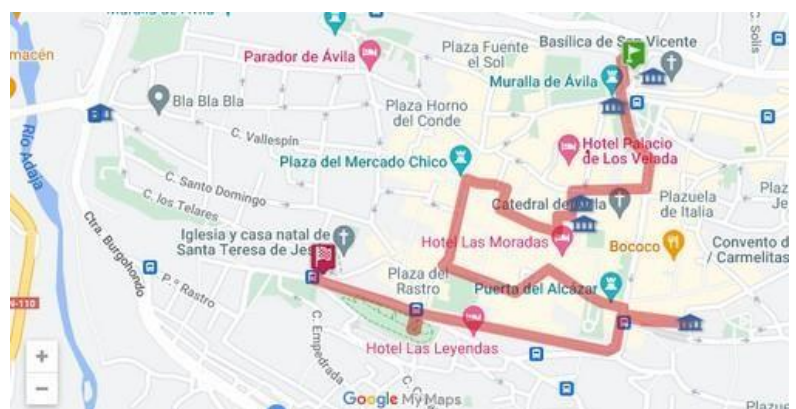
### ACCESIBLE ROUTES

Ávila is one of the main accessible tourism destinations in Spain. For years they have been working hard to offer an inclusive offer, in which all people can live and enjoy life in the city with equal opportunities. Accessibility and inclusion have become the driving force of Ávila City Council, a fact that has contributed to making the walled city a benchmark for the work carried out in terms of accessibility, as confirmed by the numerous awards received, including highlight the CERMI, Reina Sofía or having been declared the first European City of Accessibility in 2011.

-Wall Brochure in Easy Reading

- Santa Teresa Easy Read Brochure
- Easy Reading Brochure Palacio Superunda Caprotti
- Brochure Teresian Monuments easy reading
- Easy Read Brochure 9 Doors

So that all tourists can comfortably enjoy the city, an accessible route has been designed that connects the main monuments of Avila



Rutas Accesibles - Ciudades Patrimonio de la Humanidad

<https://www.ciudadespatrimonio.org/accesibilidad/ruta.php?cd=2>

# 3. CASTILLA Y LEÓN EASY TO READ TOURISM INFORMATION

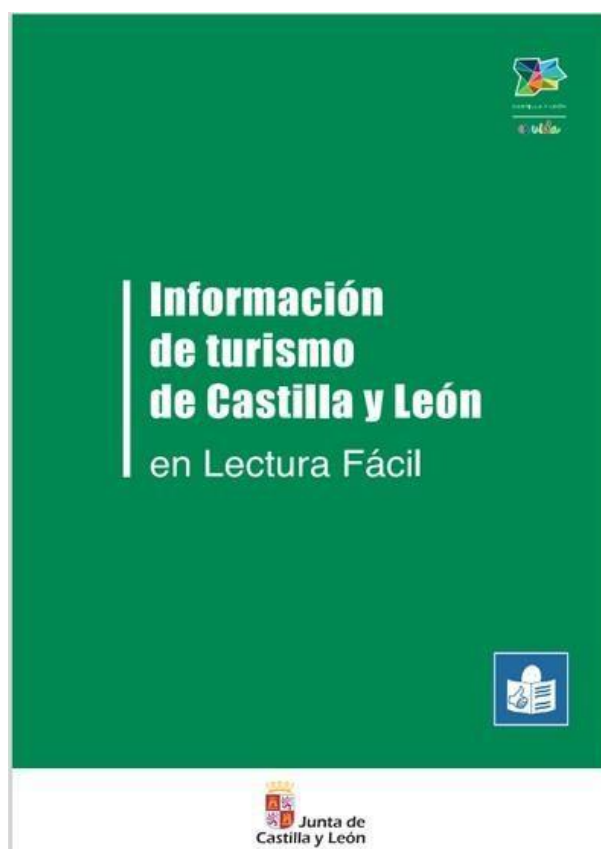


This guide is an easy-to-read version of the document "Vive Castilla y León" from the Ministry of Culture and Tourism. This guide and the original guide are on the Castilla y León Tourism Portal: [www.turismocastillayleon.com/](http://www.turismocastillayleon.com/).

**Publisher:**  
Siglo Foundation for  
Tourism and the Arts  
of Castilla y León.

**Adaptation to easy  
reading:**  
Full inclusion Castilla  
y León.

**Validation:**  
Asprona León



<https://www.turismocastillayleon.com/es/informacion-viajero/servicios/publicaciones/vive-castilla-leon-lectura-facil-informacion-turistica.ficheros/218003-Folleto%20de%20informaci%C3%B3n%20de%20turismo%20de%20Castilla%20y%20Le%C3%B3n%20en%20lectura%20f%C3%A1cil.pdf>



## 4. GUGGENHEIM MUSEUM – BILBAO

On December 19, 2003, the certifying entity AENOR granted the Guggenheim Museum Bilbao the UNE 170.001-2 certification that certifies the implementation of a global accessibility management system, the Museum being the first organization in the State to obtain this accreditation



GuiDED  
touRs foR PEoPLE with  
DivERsE nEEDs

•

GuiDED touRs with a  
sign languagE  
intERPReTER foR DEaf  
PEoPLE.

•

Visits foR PEoPLE with  
intELLEctual DisaBilitiEs

•

TactilE visits foR Blind  
PEoPLE.



The Guggenheim Museum Bilbao has developed a website that establishes the accessibility of its contents as a priority in compliance with the Accessibility Guidelines established by the WAI Working Group (Web Accessibility Initiative, [www.w3.org/wai](http://www.w3.org/wai)) belonging to the W3C (Consortium for the World Wide Web).

The use of web standards established by the W3C allows the website to be displayed correctly on different devices and platforms, as well as to properly print its content.

**Accesibility guide of Museo Guggenheim Bilbao**

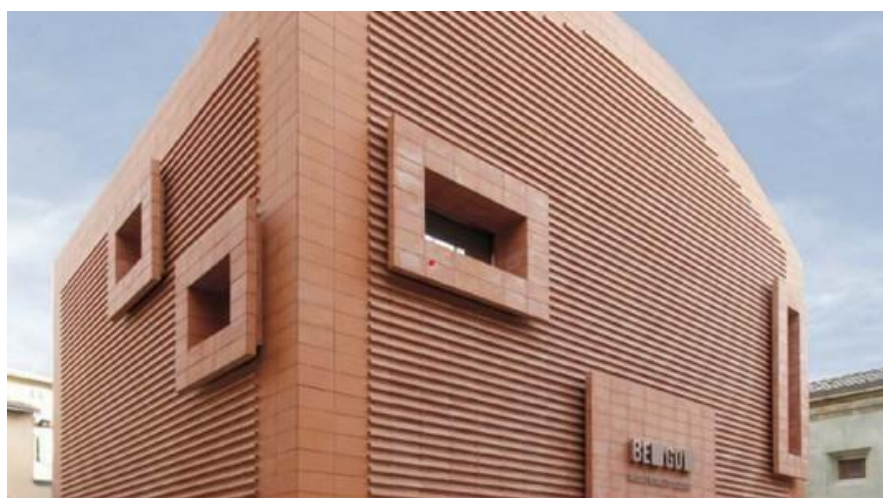
<https://cms.guggenheim-bilbao.eus/uploads/2019/11/Accesibilidad-ES.pdf>

# 5. BENOZZO GOZZOLI MUSEUM FIRENZE, ITALY



The BeGo museum has made its two rooms and the works preserved in them accessible to people with intellectual disabilities. It has joined the Museum for All project, conceived and executed by the Associazione l'Abilità Onlus with the De Agostini Foundation, which aims to promote social inclusion and full access to culture for people with intellectual disabilities through itineraries educational and specific materials, which allow everyone to experience the museums in a pleasant way.

THE matERials  
offERED:  
EasY REaDing  
caRDs  
social HistoRY and  
AAC caRDs



BeGo  
Museo Benozzo Gozzoli



Guida "Museo per tutti".  
Guida di lettura facilitata  
per le persone con disabilità intellettiva.

<http://www.museobenozzogozzoli.it/it>

# 6. TOURIST GUIDE OF THE ABRUZZO REGION



È ON- LINE LA GUIDA  
TURISTICA  
DELL'ABRUZZO IN  
LINGUAGGIO "EASY TO  
READ"



matERials PRoDucED BY Anffas ABRuzzo, Anffas



# 7. GUIDA DELLE VILLAE DI TIVOLI, ITALY



- Guida delle Villae di Tivoli made by Anffas Nazionale in collaboration with the Office of Promotion and Communication – Servizio Accessibilità dell'Istituto Villa Adriana e Villa d'Este

## Il viale delle Cento Fontane

Il viale delle Cento Fontane è stato costruito nell'anno 1565.

Il viale è lungo 130 metri e ha una lunga vasca con tanti zampilli e getti d'acqua.

Lungo il viale si possono ancora vedere le statue di animali o piccoli mostri con la bocca aperta che buttano acqua in uno dei canali.

Qui accanto puoi vedere una foto del viale delle Cento Fontane



Villa Adriana  
Villa d'Este  
Santuario di Ercole Vincitore  
Mensa Ponderaria



Il Museo di tutti per tutti  
Guida in linguaggio facile da leggere e da capire  
© Iniziativa europea per l'accesso alle culture Europee  
Maggiori informazioni su [www.easy-to-read.eu](http://www.easy-to-read.eu)



VILLÆ  
TIVOLI

**Anffas** ONIUS  
NAZIONALE  
ASSOCIAZIONE NAZIONALE  
FAMIGLIE DI PERSONE CON DISABILITÀ  
INTELLETTIVA E/O RELAZIONALE  
dal 1958 la persona al centro



# 8. BURGOS CATHEDRAL APP



ADaPta BuRgos of tHE AsPanias BuRgos,  
cognitive accEsiBilitY sERvicE

The Burgos Educational Training and Innovation Center for teachers, in addition to the Aspanias Foundation, the Cathedral Management team and the VIII Centenario Foundation have developed this collaborative project.



an innovative  
intERactive Digital  
aPPlication and  
EDucational matERial



<https://play.google.com/store/apps/>

# 9. THE TACTILE LOOK. VERSION OF THE PICTOGRAMS



## 2. PONT PENJAT



Publisher: Cultural Heritage Office, Barcelona Provincial Council and Rupit i Pruit City Council

Text adaptation: Laia Vidal (Easy Reading Association) With the support of: Aprenem Autisme and the Catalan Autism Federation  
Pictograms: BJ  
Adaptations



RUPIT ESTÀ ENVOLTAT PER UNA RIERA.

**1945**



L'ANY 1945 ES VA CONSTRUIR UN PONT PENJAT.



HI HA MOLTES FONTS, MOLINS I SALTS D'AIGUA.

PlacEs of intEREst in RuPit and PRuit  
GuiDE with PictogRams showing thE  
most REPRESentative PlacEs in RuPit  
and PRuit.

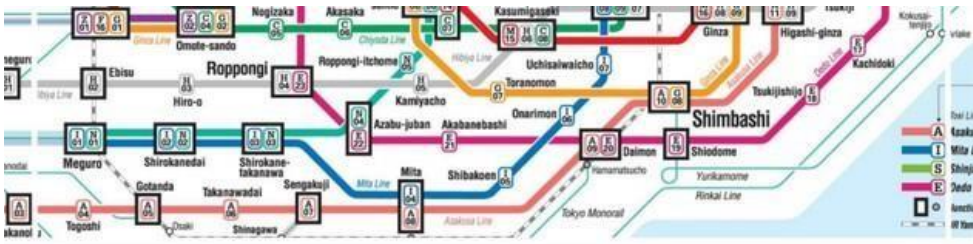
CultuRal HERitagE OfficE of thE  
BaRcElona PRowincial Council



**GOOD GUIDES**

# 10. GUIDES FOR PROFESSIONALS

## PLENA INCLUSION SPAIN



cognitive  
accessibility on  
maps

**Cómo crear planos y mapas  
accesibles**



91 5567413



[www.plenainclusion.org](http://www.plenainclusion.org)



Avda. General Perón 32  
28020. Madrid (España)

How to Evaluate  
cognitive accessibility  
of the Environment

cognitive accessibility



**Guía de evaluación de la  
accesibilidad cognitiva de entornos**

Metodología común del movimiento asociativo Plena inclusión



91 5567413



[www.plenainclusion.org](http://www.plenainclusion.org)



Avda. General Perón 32  
28020. Madrid (España)



# 11. ENGLAND'S INCLUSIVE TOURISM ACTION GROUP



guidancE on how to suPPoRt all customERs



Business Support Guides

## Dementia-friendly tourism

A practical guide for businesses

<https://www.facebook.com/groups/acceasy>

share and contribute: accEasy cultural heritage network

Neither the FUNDACIÓN ASPANIAS BURGOS nor the European Commission nor any third parties who may provide information to this guide for dissemination purposes shall have any responsibility for or be liable in respect of the content or the accuracy of the information so provided, or for any errors or omissions therein, nor for the consequences of any actions taken or not taken as a result of this information.

The contents of this website reflect the views only of the author, and the European Commission cannot be held responsible for any use which may be made of the information contained herein.

Disclaimer clause

"The "ACCEASY" project is co-funded by the Erasmus+ programme of the European Union. The content of this good practice guide is the sole responsibility of the ACCEASY consortium and neither the European Commission nor the Spanish Service for the Internationalisation of Education (SEPIE) is responsible for any use that may be made of the information contained therein".

<http://www.sepie.es>



Cofinanciado por  
la Unión Europea